

November 7, 2001

DESCRIPTION

## PARCEL IN

SECTIONS 25 AND 36, TOWNSHIP 43 SOUTH, RANGE 25 EAST  
AND  
SECTIONS 28, 29, 30, 31, 32 AND 33, TOWNSHIP 43 SOUTH, RANGE 26 EAST  
LEE COUNTY, FLORIDA

A tract or parcel of land lying in Sections 25 and 36, Township 43 South, Range 25 East, and Sections 28, 29, 30, 31, 32 and 33, Township 43 South, Range 26 East, Lee County, Florida, being more particularly described as follows:

Beginning at the southwest corner of the Northeast Quarter (NE-1/4) of the Northeast Quarter (NE-1/4) of Section 36, Township 43 South, Range 25 East run S 89° 08' 18" W along the south line of the Northwest Quarter (NW-1/4) of the Northeast Quarter (NE-1/4) of said Section 36 for 1324.04 feet; thence run N 00° 50' 29" W along the west line of said fraction for 740.15 feet to an intersection with the southeasterly right-of-way line of Palm Beach Boulevard (State Road No. 80); thence run N 71° 36' 06" E (140.00 feet southeasterly of and parallel with the centerline of State Road No. 80 as shown on right-of-way map Section 12020-2538) along said southeasterly right-of-way line for 1465.40 feet; thence run S 18° 23' 54" E along the southwesterly line of lands as described by deed recorded in Official Record Book 3091 at Page 3870 of the Public Records of Lee County, Florida, for 10.00 feet; thence run S 71° 36' 06" W along the northwesterly line of said lands for 49.43 feet; thence run southerly, southeasterly and easterly along the southwesterly line of said lands and along the arc of a curve to the left of radius 350.00 feet (chord bearing S 56° 17' 11" E) (chord 397.61 feet) (delta 69° 13' 26") for 422.87 feet to a point of tangency; thence run N 89° 06' 06" E for 45.96 feet; thence run N 18° 23' 54" W along the northeasterly line of said lands for 337.62 feet to an intersection with said southeasterly line of said Palm Beach Boulevard; thence run N 71° 36' 06" E (140.00 feet southeasterly of and parallel with said centerline of State Road No. 80) along said centerline of State Road No. 80) along said right-of-way line for 95.73 feet; thence run S 18° 23' 54" E for 10.00 feet; thence run N 71° 36' 06" E (150.00 feet southeasterly of and parallel with said centerline of State Road No. 80) along said southeasterly right-of-way line for 978.51 feet to an intersection with the east line of said Section 25, Township 43 South, Range 25 East; thence run N 00° 43' 19" W along said east line for 27.29 feet; thence run N 71° 36' 06" E (124.00 feet southeasterly of and parallel with said centerline of State Road No. 80) along the southeasterly right-of-way line of Palm Beach Boulevard for 313.06 feet; thence run S 18° 23' 54" E for 16.00 feet; thence run N 71° 36' 06" E (140.00 feet southeasterly of and parallel with said centerline of State Road No. 80) along said southeasterly right-

of-way line for 661.54 feet to a point of curvature; thence run northeasterly along said southeasterly right-of-way line and an arc of said curve to the right of radius 5589.55 feet (chord bearing N 72° 17' 37" E) (chord 135.00 feet) (delta 01° 23' 02") for 135.00 feet; thence run N 17° 00' 52" W for 20.00 feet; thence run northeasterly (120.00 feet southeasterly of and parallel with said centerline of State Road No. 80) along said southeasterly right-of-way line and along the arc of a curve to the right of radius of 5609.55 feet (chord bearing N 73° 59' 12" E) (chord 196.03 feet) (delta 02° 00' 09") for 196.05 feet; thence run N 67° 44' 10" E along said southeasterly right-of-way line for 299.35 feet; thence run N 77° 10' 13" E (75.00 feet southeasterly of and parallel with said centerline of State Road No. 80) along said southeasterly right-of-way line for 961.79 feet to an intersection with the westerly line of lands described by deed recorded in Official Record Book 1200 beginning at page 710 of the Public Records of Lee County, Florida; thence run S 12° 49' 47" E along said west line for 175.00 feet; thence run N 77° 10' 13" E along the south line of said parcel for 125.00 feet; thence run N 12° 49' 47" W along the east line of said parcel for 175.00 feet to an intersection with the southeasterly right-of-way line of said Palm Beach Boulevard; thence run N 77° 10' 13" E (75.00 feet southeasterly of and parallel with said centerline of State Road No. 80) along said southeasterly right-of-way line for 1781.13 feet to an intersection with the west line of lands described by deed recorded in Official Record Book 1418 beginning at Page 2194 of said Public Records; thence run S 12° 49' 47" E along said west line for 155.00 feet; thence run N 77° 10' 13" E along the south line of said parcel for 95.00 feet to an intersection with the west line of lands described by deed in recorded Official Record Book 655 beginning at Page 407 of said Public Records; thence run S 01° 29' 33" E along said west line for 865.78 feet to an intersection with the north line of a Florida Power & Light Company Transmission Line Easement; thence run N 89° 02' 25" E along said north line for 2281.83 feet; thence run N 01° 29' 33" W along the west line of lands as described by deed recorded in Official Record Book 2571 at Page 1261 of said Public Records for 1502.56 feet to an intersection with the southeasterly right-of-way line of said Palm Beach Boulevard; thence run N 77° 10' 13" E (75.00 feet southeasterly of and parallel with said centerline of State Road No. 80) along said southeasterly right-of-way line for 3785.98 feet; thence run S 24° 33' 10" W along the westerly line of lands as described by deed recorded in Official Record Book 1797 at Page 1141 of said Public Records for 377.20 feet; thence run N 77° 10' 13" E along the southerly line of said lands for 700.86 feet; thence run S 24° 33' 10" W along the westerly line of lands as described by deed recorded in Official Record Book 643 at Page 499 of said Public Records for 882.33 feet; thence run S 65° 27' 20" E along the southerly line of said lands for 1320.81 feet to an intersection with the northwesterly right-of-way line of Buckingham Road (100 feet wide); thence run S 24° 32' 53" W along said northwesterly right-of-way line for 576.76 feet; thence continuing along said right-of-way line run S 24° 29' 54" W for 220.89 feet to an intersection with a line 50.00 feet north of (as measured on a perpendicular) and parallel with the centerline of said Florida Power & Light Company Transmission Line Easement; thence run N 89° 02' 25" E along said

line for 22.15 feet; thence run S 24° 29' 54" W along said northwesterly right-of-way line of Buckingham Road (60.00 feet wide) for 88.69 feet; thence run S 24° 23' 10" W continuing along the northwesterly right-of-way line of Buckingham Road for 3484.76 feet to an intersection with the north line of the Southeast Quarter (SE-1/4) of said Section 32; thence run N 89° 46' 39" W along said north line for 893.56 feet; thence run S 00° 41' 52" E along the west line of the Northeast Quarter (NE-1/4) of said Southeast Quarter (SE-1/4) of Section 32 for 1343.62 feet; thence run N 89° 36' 23" E along the south line of said fraction for 270.55 feet to an intersection with said westerly right-of-way line of Buckingham Road (60.00 feet wide); thence run S 24° 23' 10" W along said right-of-way line for 533.98 feet to a point of curvature; thence run southerly along an arc of said curve to the left of radius 730.00 feet (chord bearing S 11° 34' 12" W) (chord 323.87 feet) (delta 25° 37' 58") for 326.59 feet to a point of tangency; thence run S 01° 14' 47" E along the westerly right-of-way line of Buckingham Road (60.00 feet wide) for 292.11; thence run S 88° 59' 59" W along a line parallel with the north right-of-way of Bird Road (50.00 feet wide) and 240.00 feet north of the centerline (as measured on a perpendicular) for 38.99 feet to an intersection with a non-tangent curve; thence southwesterly (25.00 feet southeasterly and concentric with a proposed right-of-way 50.00 feet wide) along an arc of said curve to the right of radius 200.00 feet (chord bearing S 27° 50' 42" W) (chord 80.90 feet) (delta 23° 20' 16") for 81.46 feet to a point of tangency; thence run S 39° 30' 50" W for 90.84 feet to a point of curvature; thence southwesterly (25.00 feet southeasterly and concentric with said proposed right-of-way) along an arc of said curve to the right of radius 200.00 feet (chord bearing S 59° 56' 50" W) (chord 139.65 feet) (delta 40° 51' 59") for 142.65 feet to an intersection with a non-tangent line; thence run S 01° 14' 47" E parallel with said westerly right-of-way line of Buckingham Road for 32.26 feet to an intersection with the north right-of-way line of Bird Road; thence run S 88° 59' 59" W along the northerly right-of-way line of Bird Road as described by deed recorded in Deed Book 242 at Page 118 of said Public Records for 380.35 feet; thence run N 00° 34' 58" W along the west line of the Southeast Quarter (SE-1/4) of the Southwest Quarter (SW-1/4) of the Southeast Quarter (SE-1/4) of said Section 32, Township 43 South, Range 26 east for 327.62 feet; thence run S 89° 09' 03" W along the south line of the North Half (N-1/2) of the Southwest Quarter (SW-1/4) of the Southwest Quarter (SW-1/4) of the Southeast Quarter (SE-1/4) of said Section 32 for 659.45 feet; thence run N 00° 28' 09" W along the west line of the Southeast Quarter (SE-1/4) of said Section 32 for 1018.10 feet; thence run N 87° 48' 58" W along the north line of the South Half (S-1/2) of the Southwest Quarter (SW-1/4) of said Section 32 for 1311.96 feet; thence run S 00° 04' 13" E along the East line of the Southwest Quarter (SW-1/4) of the Southwest Quarter (SW-1/4) of said Section 32 for 852.37 feet; thence run N 87° 48' 58" W parallel with the north line of said Southwest Quarter (SW-1/4) of the Southwest Quarter (SW-1/4) for 497.77 feet; thence run S 00° 04' 13" E parallel with the east line of said Southwest Quarter (SW-1/4) of the Southwest Quarter (SW-1/4) for 540.88 feet; thence run S 89° 45' 59" W along said northerly right-of-way line of Bird Road for 40.00 feet; thence run

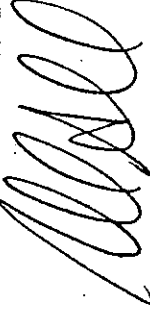
S 00° 14' 01" E along the westerly end of said right-of-way of Bird Road for 40.00 feet to an intersection with the south line of said Section 32, Township 43 South, Range 26 East; thence run S 89° 45' 59" W along said south line for 172.45 feet to the northerly Mean High Water Line of the Orange River; thence run the following courses and distances along said Mean High Water Line: N 45° 06' 26" W for 18.87 feet; N 56° 46' 36" W for 46.08 feet; N 53° 57' 48" W for 34.41 feet; N 57° 56' 07" W for 41.99 feet; N 43° 24' 08" W for 45.63 feet; N 47° 59' 50" W for 16.92 feet; N 43° 34' 39" W for 29.33 feet; N 15° 33' 28" E for 39.23 feet; N 01° 42' 28" E for 27.66 feet; N 23° 32' 32" W for 47.19 feet; N 69° 46' 03" W for 42.51 feet; N 71° 54' 43" W for 31.75 feet; N 77° 41' 11" W for 18.84 feet; N 89° 26' 13" W for 19.03 feet; S 84° 16' 30" W for 54.47 feet; S 84° 42' 25" W for 58.03 feet; N 84° 08' 32" W for 46.34 feet; S 85° 31' 26" W for 16.73 feet; S 84° 49' 31" W for 58.03 feet; N 24° 36' 26" W for 77.71 feet; S 47° 16' 14" W for 77.49 feet; N 51° 14' 41" W for 59.52 feet; N 23° 25' 46" W for 16.65 feet; S 89° 32' 08" E for 17.25 feet; S 77° 31' 32" E for 62.12 feet; N 36° 20' 59" E for 22.55 feet; N 74° 21' 25" W for 53.45 feet; N 86° 50' 06" W for 59.74 feet; N 34° 58' 31" W for 105.56 feet; N 26° 07' 51" W for 112.76 feet; N 57° 18' 44" W for 100.20 feet; N 65° 20' 44" W for 102.12 feet; N 71° 47' 03" W for 42.09 feet; N 63° 39' 58" W for 56.62 feet; N 36° 32' 48" W for 27.09 feet; N 57° 17' 09" W for 62.14 feet; N 40° 19' 05" W for 37.96 feet; N 48° 08' 05" W for 62.73 feet; N 49° 48' 48" W for 100.01 feet; N 65° 11' 42" W for 103.29 feet; N 77° 37' 55" W for 112.16 feet; N 35° 35' 30" W for 103.58 feet; N 19° 39' 12" W for 116.72 feet; N 56° 13' 47" W for 166.68 feet; N 79° 13' 22" W for 107.29 feet; N 85° 55' 45" W for 100.13 feet; N 84° 43' 02" W for 48.54 feet; N 80° 49' 06" W for 50.05 feet; N 81° 30' 18" W for 50.03 feet; N 82° 59' 38" W for 50.00 feet; N 84° 08' 23" W for 50.00 feet; N 83° 03' 46" W for 20.84 feet; N 66° 51' 37" W for 44.07 feet; N 05° 42' 14" W for 29.45 feet; N 32° 42' 14" W for 67.21 feet; N 35° 27' 33" W for 54.18 feet; N 41° 21' 52" W for 57.32 feet; N 42° 42' 36" W for 28.67 feet; N 61° 57' 35" W for 70.56 feet; S 85° 43' 59" W for 70.45 feet; S 69° 46' 22" W for 50.69 feet; S 57° 39' 00" W for 53.78 feet; S 76° 56' 04" W for 100.08 feet; S 60° 30' 04" W for 105.61 feet; S 72° 51' 47" W for 50.31 feet; S 78° 33' 58" W for 150.01 feet; N 88° 35' 07" W for 102.30 feet; S 73° 30' 53" W for 100.50 feet; S 71° 27' 09" W for 100.93 feet; S 84° 45' 26" W for 75.11 feet; N 60° 17' 41" W for 94.30 feet; N 54° 34' 16" W for 100.55 feet; N 53° 31' 30" W for 50.38 feet; N 46° 36' 41" W for 51.53 feet; N 47° 34' 22" W for 41.06 feet; N 62° 57' 57" W for 35.03 feet; N 71° 21' 06" W for 50.89 feet; N 74° 59' 20" W for 77.43 feet; N 81° 33' 02" W for 107.08 feet; N 18° 07' 10" W for 135.58 feet; N 79° 02' 14" W for 105.41 feet; N 44° 03' 08" W for 104.32 feet; N 65° 16' 53" W for 100.34 feet; N 86° 23' 50" W for 111.08 feet; N 88° 49' 57" W for 65.84 feet; N 78° 30' 23" W for 74.62 feet; N 80° 48' 46" W for 75.66 feet; N 66° 18' 15" W for 44.22 feet; N 43° 05' 21" W for 81.79 feet; N 37° 21' 11" W for 116.45 feet; N 46° 17' 31" W for 73.27 feet; N 52° 18' 55" W for 101.05 feet; N 74° 36' 15" W for 83.75 feet; N 80° 01' 16" W for 100.85 feet;

N 87° 33' 44" W for 103.52 feet; S 87° 38' 31" W for 35.74 feet;  
N 77° 39' 57" W for 57.72 feet; N 57° 23' 13" W for 21.93 feet; N 51° 27' 33" W  
for 28.52 feet; N 71° 03' 05" W for 42.12 feet; N 55° 50' 43" W for 36.63 feet;  
N 12° 38' 42" E for 62.00 feet; S 43° 27' 37" E for 53.83 feet; S 53° 31' 07" E for  
38.84 feet; N 71° 27' 46" E for 28.94 feet; N 24° 34' 16" E for 50.66 feet;  
N 87° 41' 20" E for 74.49 feet; N 07° 19' 19" E for 10.30 feet; N 48° 56' 11" E  
for 50.16 feet; S 73° 38' 34" E for 46.36 feet; N 78° 15' 50" E for 41.47 feet;  
N 82° 02' 15" E for 49.30 feet; N 51° 17' 47" E for 37.12 feet; N 29° 29' 45" E  
for 37.23 feet; N 22° 40' 51" E for 44.44 feet; N 41° 02' 55" E for 38.07 feet;  
N 47° 57' 27" E for 37.23 feet; N 44° 16' 56" E for 19.49 feet; N 68° 50' 25" E  
for 14.57 feet; S 80° 06' 11" E for 8.69 feet; S 21° 20' 21" E for 17.38 feet;  
S 11° 02' 23" W 17.69 feet; S 10° 23' 34" E for 29.02 feet; S 20° 09' 45" E for  
19.16 feet; S 33° 19' 00" E for 18.71 feet; S 43° 52' 52" E for 13.14 feet;  
S 56° 04' 47" E for 17.05 feet; S 85° 58' 36" E for 25.05 feet; N 55° 09' 03" E for  
16.25 feet; N 23° 20' 52" E for 18.38 feet; N 31° 18' 30" E for 26.84 feet;  
N 58° 56' 24" E for 44.83 feet; N 85° 22' 09" E for 30.52 feet; N 71° 46' 13" E  
for 37.07 feet; N 74° 29' 04" E for 24.64 feet; N 19° 56' 59" E for 28.91 feet;  
N 28° 49' 11" E for 43.73 feet; N 67° 29' 07" E for 26.50 feet; S 82° 38' 04" E  
for 33.41 feet; S 49° 12' 32" E for 37.03 feet; S 71° 36' 38" E for 8.38 feet;  
S 60° 33' 08" E for 15.21 feet; S 01° 46' 40" W for 2.82 feet; S 68° 05' 27" E for  
15.16 feet; S 83° 52' 05" E for 36.79 feet; S 86° 59' 33" E for 31.85 feet;  
S 47° 44' 05" E for 17.99 feet; S 10° 55' 59" E for 39.26 feet; S 33° 03' 17" E for  
13.76 feet; S 64° 38' 24" E for 24.53 feet; N 46° 42' 10" E for 27.16 feet;  
N 43° 41' 59" E for 24.94 feet; S 30° 54' 52" E for 25.36 feet; S 04° 54' 48" E for  
22.36 feet; S 38° 47' 51" E for 14.21 feet; S 79° 14' 26" E for 18.79 feet;  
N 61° 12' 13" E for 20.15 feet; N 73° 41' 37" E for 27.62 feet; N 61° 10' 59" E  
for 25.89 feet; N 79° 09' 50" E for 12.66 feet; S 83° 45' 11" E for 19.22 feet;  
S 54° 34' 35" E for 20.46 feet; S 84° 33' 17" E for 15.44 feet; S 87° 03' 22" E for  
13.94 feet; N 79° 24' 28" E for 20.27 feet; N 57° 05' 20" E for 17.59 feet;  
N 38° 33' 12" E for 20.41 feet; N 09° 11' 05" W for 19.97 feet; N 07° 01' 50" E  
for 18.08 feet; N 69° 18' 49" E for 6.64 feet; S 84° 48' 23" E for 17.43 feet;  
N 88° 24' 50" E for 22.39 feet; S 49° 30' 56" E for 20.02 feet; S 39° 07' 26" E for  
24.66 feet; S 54° 23' 12" E for 21.02 feet; N 30° 33' 02" W for 23.39 feet;  
N 39° 06' 59" W for 25.77 feet; N 55° 02' 48" W for 22.20 feet; N 83° 00' 06" W  
for 29.53 feet; S 85° 08' 45" W for 12.98 feet; S 68° 26' 31" W for 8.53 feet;  
S 32° 16' 14" W for 11.69 feet; S 04° 38' 50" W for 11.89 feet; S 12° 43' 25" W  
for 15.88 feet; S 06° 11' 25" W for 13.99 feet; S 53° 27' 20" W for 26.35 feet;  
N 88° 31' 34" W for 15.71 feet; N 79° 18' 58" W for 20.09 feet; N 54° 44' 16" W  
for 24.36 feet; S 83° 12' 12" W for 39.97 feet; S 66° 41' 45" W for 57.72 feet;  
S 77° 09' 04" W for 10.60 feet; N 87° 27' 35" W for 13.12 feet; N 15° 29' 15" W  
for 14.68 feet; N 14° 08' 19" E for 24.22 feet; S 74° 19' 20" W for 13.37 feet;  
N 09° 16' 01" W for 23.33 feet; S 84° 39' 37" W for 15.22 feet; S 47° 14' 52" W  
for 50.32 feet; S 83° 51' 57" W for 8.42 feet; N 09° 08' 00" W for 35.15 feet;  
N 20° 15' 17" W for 22.74 feet; N 44° 02' 09" W for 21.64 feet; N 84° 48' 44" W  
for 50.31 feet; N 82° 25' 35" W for 30.68 feet; N 63° 03' 33" W for 11.35 feet;  
S 60° 24' 24" W for 3.49 feet; N 57° 59' 35" W for 15.19 feet; N 03° 41' 29" W

for 7.39 feet; N 40° 33' 16" W for 21.13 feet; N 70° 52' 44" W for 24.20 feet; N 85° 26' 59" W for 21.64 feet; S 76° 54' 10" W for 24.51 feet; S 55° 03' 33" W for 13.08 feet; S 37° 21' 36" W for 40.55 feet; S 13° 40' 53" W for 13.81 feet; S 31° 23' 28" W for 26.81 feet; S 69° 26' 21" W for 16.03 feet; S 81° 46' 39" W for 18.06 feet; S 84° 45' 44" W for 23.61 feet; S 79° 32' 37" W for 32.77 feet; S 60° 36' 51" W for 17.33 feet; S 49° 21' 45" W for 42.86 feet; S 17° 09' 36" W for 27.28 feet; S 53° 52' 37" W for 19.21 feet; N 81° 59' 46" W for 15.06 feet; N 48° 57' 38" W for 21.40 feet; N 27° 41' 09" W for 17.58 feet; N 17° 17' 52" W for 20.09 feet; N 12° 34' 40" W for 15.97 feet; N 03° 49' 54" W for 18.05 feet; N 11° 17' 42" E for 11.66 feet; N 16° 22' 28" W for 27.94 feet; N 87° 36' 44" W for 19.14 feet; S 55° 10' 52" W for 42.24 feet; S 47° 59' 06" W for 38.25 feet; S 41° 02' 55" W for 38.07 feet; S 31° 37' 16" W for 42.75 feet; S 15° 03' 42" W for 36.49 feet; S 45° 15' 07" W for 37.77 feet; S 88° 49' 58" W for 47.91 feet; S 83° 57' 47" W for 36.88 feet; N 78° 29' 40" W for 45.40 feet; S 58° 44' 26" W for 44.23 feet; S 78° 14' 05" W for 67.79 feet; S 87° 59' 14" W for 11.88 feet; S 69° 01' 11" W for 42.10 feet; N 66° 25' 19" W for 50.29 feet; N 80° 56' 55" W for 50.54 feet; S 55° 19' 33" W for 81.37 feet; N 63° 01' 18" W for 101.41 feet; N 68° 14' 24" W for 100.29 feet; N 66° 18' 32" W for 100.60 feet; N 62° 22' 56" W for 50.80 feet; N 30° 47' 22" W for 67.07 feet; N 23° 46' 42" W for 178.60 feet; N 48° 04' 37" W for 51.68 feet; N 55° 51' 39" W for 109.33 feet; N 83° 18' 40" W for 100.20 feet; N 86° 07' 27" W for 121.31 feet; N 30° 37' 36" W for 114.37 feet; N 69° 28' 19" W for 101.49 feet; N 49° 27' 28" W for 48.79 feet; N 67° 01' 19" W for 39.09 feet; N 87° 58' 08" W for 100.02 feet; S 82° 51' 42" W for 101.02 feet; N 71° 27' 29" W for 52.15 feet; N 85° 42' 38" W for 64.74 feet; N 73° 39' 57" W for 53.59 feet; N 62° 54' 06" W for 50.05 feet; N 56° 56' 34" W for 69.88 feet; N 68° 15' 54" W for 47.88 feet; N 67° 42' 10" W for 42.23 feet; N 81° 39' 25" W for 60.10 feet; S 76° 46' 24" W for 57.11 feet; S 56° 31' 23" W for 14.95 feet to an intersection with the west line of the Southeast Quarter (SE-1/4) of the Northeast Quarter (NE-1/4) of Section 36, Township 43 South, Range 25 East; thence run N 00° 46' 17" W along said west line for 987.65 feet to the Point of Beginning.

Contains 1,455.37 acres, more or less.

Bearings hereinabove mentioned are plane coordinate for the Florida West Zone, NAD 1983 (1990 Adjustment).



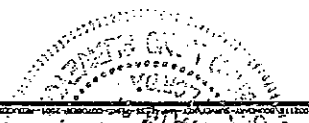
Michael A. Ward (for The Firm LB-642)  
Professional Land Surveyor  
Florida Certificate No. 5301

20002118/Description 110701

DATE: AUG 2002 PROJECT NO.: 20002118 FILE NO.: 23-43-23 NOT TO SCALE SHEET: 1 OF 1 SKETCH TO ACCOMPANY DESCRIPTION



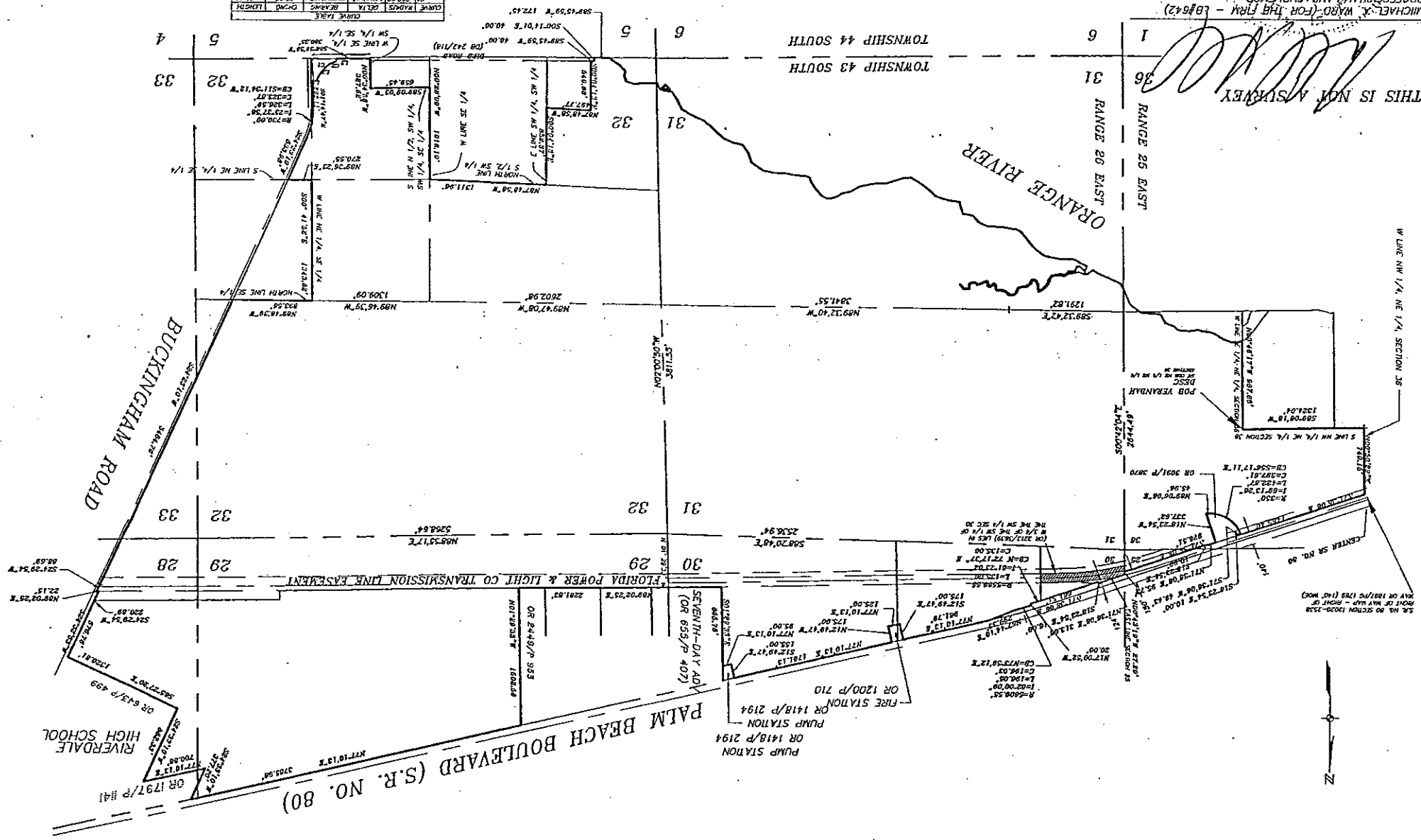
PARCELS IN SECTIONS 28, 29, 30, 31, 32 & 33, T. 43 S., R. 26 E. LEE COUNTY, FLORIDA



NOT VALID WITHOUT THE SIGNATURE AND THE ORIGINAL RAISED SEAL OF A FLORIDA LICENSED SURVEYOR AND MAPPER. DATE SIGNED: 9/25/2002

REDUCED COPY - NOT TO SCALE

LINE	BEARING	LENGTH
L1	S89°45'59" W	122.45
L2	S00°14'01" S	40.00
L3	S19°10'53" W	62.30
L4	S89°45'59" W	122.45
L5	S00°14'01" S	40.00
L6	S19°10'53" W	62.30



THIS IS NOT A SURVEY



EXHIBIT B

**DESCRIPTION**

(OR 1544/P 1598)

A TRACT OF LAND LYING IN GOVERNMENT LOT 7, SECTION 19, AND GOVERNMENT LOT 1, OF SECTION 30, TOWNSHIP 43 SOUTH, RANGE 26 EAST, LEE COUNTY, FLORIDA, WHICH TRACT IS DESCRIBED AS

FROM THE SOUTHWEST CORNER OF SAID GOVERNMENT LOT 1 RUN SOUTH 88°18'30" E ALONG THE SOUTH LINE OF SAID LOT FOR 50.04 FEET TO A POINT ON THE EAST LINE OF STATE ROAD 31; THENCE RUN N 0°42'30" WEST ALONG SAID EAST LINE, PARALLEL WITH THE WEST LINE OF SAID LOT FOR 595.02 FEET TO A POINT OF CURVATURE; THENCE RUN NORTHWESTERLY ALONG SAID EAST LINE, ALONG THE ARC OF A CURVE TO THE LEFT OF RADIUS 5779.58 FEET (CHORD BEARING NORTH 3°24' WEST) FOR 546.37 FEET TO A POINT OF TRANSITION ON SAID EASTERLY RIGHT OF WAY LINE TO THE POINT OF BEGINNING; FROM THIS POINT OF BEGINNING RUN NORTH 0°11'10" WEST ALONG SAID EASTERLY LINE FOR 404.51 FEET TO AN INTERSECTION WITH THE EAST LINE (100 FEET FROM THE CENTER LINE) OF SAID ROAD; THENCE RUN NORTH 7°32' WEST FOR 42.05 FEET TO AN INTERSECTION WITH THE SOUTHERLY LINE OF THE CENTRAL AND SOUTHERN FLORIDA FLOOD CONTROL DISTRICT RIGHT OF WAY FOR THE CALOOSAHATCHEE RIVER AND CANAL; THENCE RUN NORTH 7°32'50" EAST ALONG SAID SOUTH RIGHT OF WAY LINE FOR 37.02 FEET; THENCE RUN NORTH 77°27'10" EAST ALONG SAID SOUTH LINE FOR 182.57 FEET; THENCE RUN SOUTH 88°02'40" EAST ALONG SAID SOUTH LINE FOR 708.65 FEET TO AN INTERSECTION WITH A NORTHERLY PROLONGATION OF A LINE PARALLEL WITH AND 95 FEET (AS MEASURED ON A PERPENDICULAR) WESTERLY FROM THE WESTERLY LINE OF BLOCK D OF UNIT NO. 4, FORT MYERS SHORES, ACCORDING TO THE MAP OR PLAT RECORDED IN PLAT BOOK 11, PAGE 28 OF THE PUBLIC RECORDS OF LEE COUNTY, FLORIDA; THENCE RUN SOUTH 1°30' EAST ALONG SAID PROLONGATION AND PARALLEL LINE FOR 666.64 FEET; THENCE NORTH 88°18'30" WEST 889.2 FEET, MORE OR LESS, AND UNTIL IT INTERSECTION THE EASTERLY RIGHT OF WAY LINE OF SAID STATE ROUTE 31; THENCE NORTHERLY ALONG SAID EAST RIGHT OF WAY LINE ALONG THE SAME CURVE DESCRIBED ABOVE A DISTANCE OF 142 FEET, MORE OR LESS, AND BACK TO THE POINT OF BEGINNING.

DESCRIPTION TO ACCOMPANY EXHIBIT  
 PARCEL IN  
 SECTIONS 19 AND 30  
 TOWNSHIP 43 SOUTH, RANGE 26 EAST  
 LEE COUNTY, FLORIDA

**JOHNSON ENGINEERING, INC.**

ENGINEERS, SURVEYORS AND ECOLOGISTS  
 2158 JOHNSON STREET, P.O. BOX 1550, FORT MYERS, FLORIDA 33902-1550, PHONE (941) 334-0046

REV 12/1/02 - EXHIBIT SKETCH  
 REV 06/01/00 - CORRECTION  
 REV 7/13/00 - EASEMENTS  
 REV 6/13/00 - 150' ENCROACH

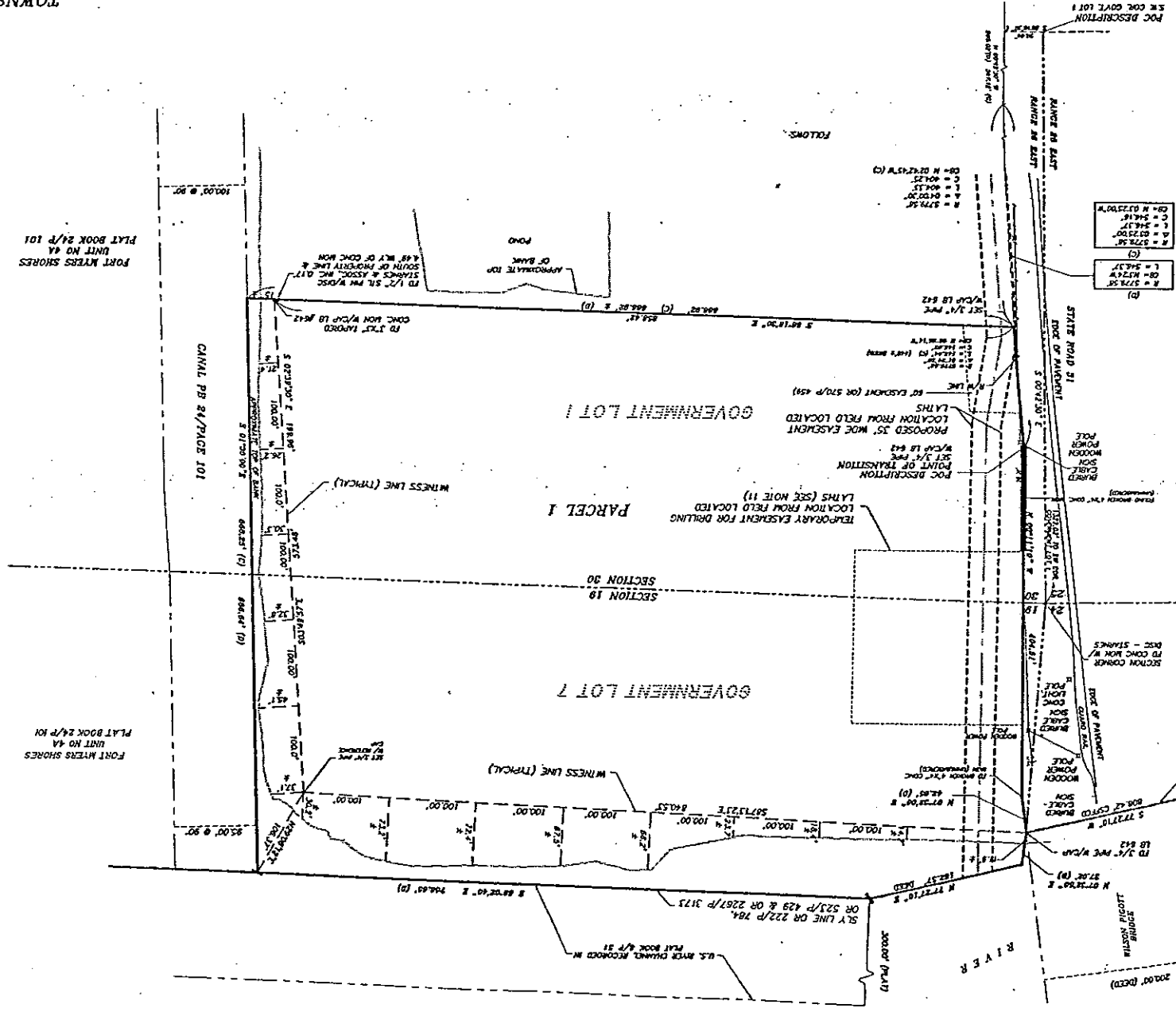
DATE	PROJECT NO.	FILE NO.	SCALE	SHEET
12/3/2002	991946	21597SUR_REV	1"=175'	2 OF 2

SUBMITTAL



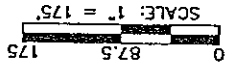
**LEGEND**

(C)	CALCULATED
(M)	MEASURED
(CONC)	CONCRETE
(W)	W/
(MTH)	MTH
(DESC)	DESCRIPTION
(POB)	POINT OF BEGINNING
(COR)	CORNER
(GOVT)	GOVERNMENT
(LB)	LAND SURVEY BUSINESS
(OR)	OFFICIAL RECORD BOOK
(DOT)	DEPARTMENT OF TRANSPORTATION
(R/W)	RIGHT OF WAY
(FD)	FOUND
(TYP)	TYPICAL
(PB)	PLAT BOOK
(R)	RADIUS
(L)	LENGTH
(C)	CHORD BEARING
(CB)	CENTRAL AND SOUTHERN FLORIDA
(CSTCO)	FLOOD CONTROL DISTRICT



**NOTES:**

- DATE OF LAST FIELD WORK, MAY 17, 2000.
- BEARINGS SHOWN HEREON ARE BASED ON THE EASTERLY RIGHT-OF-WAY LINE OF STATE ROAD NO. 21 TO BEAR N 00°42'30" W.
- THERE ARE NO HORIZONTAL ENCROACHMENTS OTHER THAN ANY SHOWN.
- THERE ARE NO SUBSTANTIAL WEIRL ENCROACHMENTS.
- SURVEY MADE WITH BEYOND OF TOWN COMMITMENT FORM, PREPARED BY ATTORNEYS THE MISSISSIPPI RIVER, INC. COMMITMENT NO. CF-27922, EFFECTIVE DATE: APRIL 23, 2000 @ 11:00 P.M.
- THIS SURVEY DOES NOT MAKE ANY REPRESENTATION AS TO ZONING OR DEVELOPMENT RESTRICTIONS ON THE SUBJECT PARCEL.
- SURVEYED PARCEL IS LOCATED IN FLOOD ZONE AE (EL. R.) AS SHOWN ON FIRM COMMUNITY PANEL 125124 0225 C, EFFECTIVE DATE: 3/15/94.
- NO ENVIRONMENTAL ASSESSMENT OR ADEQUATE WAS PERFORMED ON THE SURVEYED PARCEL BY THIS FIRM.
- THIS SURVEY WAS PERFORMED FOR THE PURPOSE SHOWN HEREON AND DOES NOT MAKE ANY REPRESENTATION AS TO THE DETERMINATION OF ANY JURISDICTIONAL LIMITS EXCEPT AS SHOWN OR NOTED HEREON.
- PARCEL CONTAINS: 11.99 ACRES, MORE OR LESS (DEED).
- THERE IS A BLANKET EASEMENT TO FLORIDA GAS TRANSMISSION COMPANY AS RECORDED IN OFFICIAL RECORD BOOK 3145 AT PAGE 224 OF THE COUNTY RECORDS FOR A 50' WIDE EASEMENT AND A 50' WIDE CONSTRUCTION EASEMENT TOGETHER WITH AN EGRESS AND EGRESS EASEMENT TO THE 25' AND 50' WIDE EASEMENTS.



**JOHNSON ENGINEERING, INC.**  
 ENGINEERS, SURVEYORS AND ECOLOGISTS  
 2158 JOHNSON STREET, P.O. BOX 1550, FORT MYERS, FLORIDA 33902-1550, PHONE (941) 334-0046  
 PROJECT NO. 991946  
 DATE 12/3/2002  
 SCALE 1"=175'  
 SHEET 1 OF 2

REV 12/2/02 - EARTH SECTION  
 REV 09/29/02 - CIRCUMFERENCE  
 REV 7/13/02 - EASEMENTS  
 REV 6/13/02 - MISC LINEWORK

SUBMITTAL

**DESCRIPTION**  
O.R. 2473, PG. 3946

THE NORTH 100 FEET OF SOUTH 200 FEET OF THE PROPERTY DESCRIBED AS FOLLOWS:

A TRACT OR PARCEL OF LAND LYING IN GOVERNMENT LOT 1 OF SECTION 30, TOWNSHIP 43 SOUTH, RANGE 26 EAST, WHICH TRACT OR PARCEL IS DESCRIBED AS FOLLOWS:

FROM THE SOUTHWEST CORNER OF SAID LOT RUN S 88° 18' 30" E ALONG THE SOUTH LINE OF SAID LOT FOR 50.04 FEET TO A POINT ON THE EASTERLY LINE OF STATE ROAD NO. 31; THENCE RUN N 00° 42' 30" W ALONG SAID EAST LINE, PARALLEL WITH THE WEST LINE OF SAID LOT FOR 100.00 FEET TO THE POINT OF BEGINNING.

FROM SAID POINT OF BEGINNING CONTINUE N 00° 42' 30" W ALONG SAID EASTERLY LINE FOR 195.02 FEET TO A POINT OF CURVATURE; THENCE RUN NORTHWESTERLY ALONG SAID EASTERLY LINE, ALONG THE ARC OF A CURVE TO THE LEFT OF RADIUS 5779.58 (CHORD BEARING N 03° 25' 00" W) FOR 546.37 FEET TO A POINT OF TRANSITION IN SAID EASTERLY RIGHT-OF-WAY LINE; THENCE RUN N 00° 11' 10" W ALONG SAID EASTERLY LINE FOR 58.39 FEET; THENCE RUN S 88° 18' 30" E, PARALLEL WITH SAID SOUTH LINE FOR 897.29 FEET TO AN INTERSECTION WITH A LINE PARALLEL WITH AND 95.00 FEET (AS MEASURED ON A PERPENDICULAR) WESTERLY LINE OF BLOCK D OF UNIT NO. 4, FORT MYERS SHORES, ACCORDING TO PLAT RECORDED IN PLAT BOOK 11, AT PAGES 28 OF THE PUBLIC RECORDS OF LEE COUNTY; THENCE RUN S 01° 30' 00" W ALONG SAID PARALLEL LINE FOR 800.54 FEET TO AN INTERSECTION WITH A LINE PARALLEL WITH SAID SOUTH LINE OF SAID LOT 1, PASSING THROUGH THE POINT OF BEGINNING; THENCE RUN NORTH 88° 18' 30" W ALONG SAID LINE FOR 883.08 FEET TO THE POINT OF BEGINNING.

**DESCRIPTION**  
O.R. 2670, PG. 3235

THE NORTH 100 FEET OF SOUTH 300 FEET OF THE PROPERTY DESCRIBED AS FOLLOWS:

BEING THE SAME DESCRIPTION AS THAT SET FORTH IN OFFICIAL RECORD BOOK 460, PAGES 33 AND 34 OF THE PUBLIC RECORDS OF LEE COUNTY, FLORIDA, IDENTIFIED AS TRACTS 27 AND 28 IN THE LEFT-HAND MARGIN.

A TRACT OF PARCEL OF LAND LYING IN GOVERNMENT LOT 1 OF SECTION 30, TOWNSHIP 43 SOUTH, RANGE 26 EAST WHICH TRACT OR PARCEL IS DESCRIBED AS FOLLOWS:

FROM THE SOUTHWEST CORNER OF SAID LOT RUN SOUTH 88 DEGREES 18' 30" EAST ALONG THE SOUTH LINE OF SAID LOT FOR 50.04 FEET TO A POINT ON THE EASTERLY LINE OF STATE ROAD NO. 31; THENCE RUN NORTH 0 DEGREES 42' 30" WEST ALONG SAID EAST LINE, PARALLEL WITH THE WEST LINE OF SAID LOT FOR 400.0 FEET TO THE POINT OF BEGINNING.

FROM SAID POINT OF BEGINNING CONTINUE NORTH 00 DEGREES 42' 30" WEST ALONG SAID EASTERLY LINE FOR 195.02 FEET TO A POINT OF CURVATURE; THENCE RUN NORTHWESTERLY ALONG SAID EASTERLY LINE, ALONG THE ARC OF A CURVE TO THE LEFT OF RADIUS 5779.58 (CHORD BEARING NORTH 3 DEGREES 25' 00" WEST) FOR 546.37 FEET TO A POINT OF TRANSITION IN SAID EASTERLY RIGHT-OF-WAY LINE; THENCE RUN NORTH 0 DEGREES 11' 10" WEST ALONG SAID EASTERLY LINE FOR 58.39 FEET; THENCE RUN SOUTH 88 DEGREES 18' 30" EAST PARALLEL WITH SAID SOUTH LINE FOR 897.29 FEET TO AN INTERSECTION WITH A LINE PARALLEL WITH AND 95.0 FEET (AS MEASURED ON A PERPENDICULAR) WESTERLY FROM THE WESTERLY LINE OF BLOCK D OF UNIT NO 4, FORT MYERS SHORES, ACCORDING TO PLAT RECORDED IN PLAT BOOK 11, AT PAGE 28 OF THE PUBLIC RECORDS OF LEE COUNTY; THENCE RUN SOUTH 1 DEGREE 30' 00" WEST ALONG SAID PARALLEL LINE FOR 800.54 FEET TO AN INTERSECTION WITH A LINE PARALLEL WITH SAID SOUTH LINE OF SAID LOT 1, PASSING THROUGH THE POINT OF BEGINNING; THENCE RUN NORTH 88 DEGREES 18' 30" WEST ALONG SAID LINE FOR 883.08 FEET TO THE POINT OF BEGINNING.

**DESCRIPTION**  
O.R. 2508, PG. 2931

THE NORTH 300 FEET OF SOUTH 600 FEET OF THE PROPERTY DESCRIBED AS FOLLOWS CONTAINING SIX AND ONE HALF ACRES MORE OR LESS.

BEING THE SAME DESCRIPTION AS THAT SET FORTH IN OFFICIAL RECORD BOOK 460, PAGES 33 AND 34 OF THE PUBLIC RECORDS OF LEE COUNTY, FLORIDA, IDENTIFIED AS TRACTS 27 AND 28 IN THE LEFT-HAND MARGIN.

A TRACT OF PARCEL OF LAND LYING IN GOVERNMENT LOT 1 OF SECTION 30, TOWNSHIP 43 SOUTH, RANGE 26 EAST WHICH TRACT OR PARCEL IS DESCRIBED AS FOLLOWS:

FROM THE SOUTHWEST CORNER OF SAID LOT RUN SOUTH 88 18' 30" E ALONG THE SOUTH LINE OF SAID LOT FOR 50.04 FEET TO A POINT ON THE EASTERLY LINE OF STATE ROAD NO. 31; THENCE RUN N 0 42' 30" W ALONG SAID EAST LINE, PARALLEL WITH THE WEST LINE OF SAID LOT FOR 400.0 FEET TO THE POINT OF BEGINNING.

FROM SAID POINT OF BEGINNING CONTINUE N 00 42' 30" W ALONG SAID EASTERLY LINE FOR 195.02 FEET TO A POINT OF CURVATURE; THENCE RUN NORTHWESTERLY ALONG SAID EASTERLY LINE, ALONG THE ARC OF A CURVE TO THE LEFT OF RADIUS 5779.58 (CHORD BEARING N 3 25' 00" W) FOR 546.37 FEET TO A POINT OF TRANSITION IN SAID EASTERLY RIGHT-OF-WAY LINE; THENCE RUN N 0 11' 10" W ALONG SAID EASTERLY LINE FOR 58.39 FEET; THENCE RUN S 88 18' 30" EAST PARALLEL WITH SAID SOUTH LINE FOR 897.29 FEET TO AN INTERSECTION WITH A LINE PARALLEL WITH AND 95.0 FEET (AS MEASURED ON A PERPENDICULAR) WESTERLY FROM THE WESTERLY LINE OF BLOCK D OF UNIT NO 4, FORT MYERS SHORES, ACCORDING TO PLAT RECORDED IN PLAT BOOK 11, AT PAGE 28 OF THE PUBLIC RECORDS OF LEE COUNTY; THENCE RUN S 1 30' 00" W ALONG SAID PARALLEL LINE FOR 800.54 FEET TO AN INTERSECTION WITH A LINE PARALLEL WITH SAID SOUTH LINE OF SAID LOT 1, PASSING THROUGH THE POINT OF BEGINNING; THENCE RUN NORTH 88 18' 30" W ALONG SAID LINE FOR 883.08 FEET TO THE POINT OF BEGINNING.

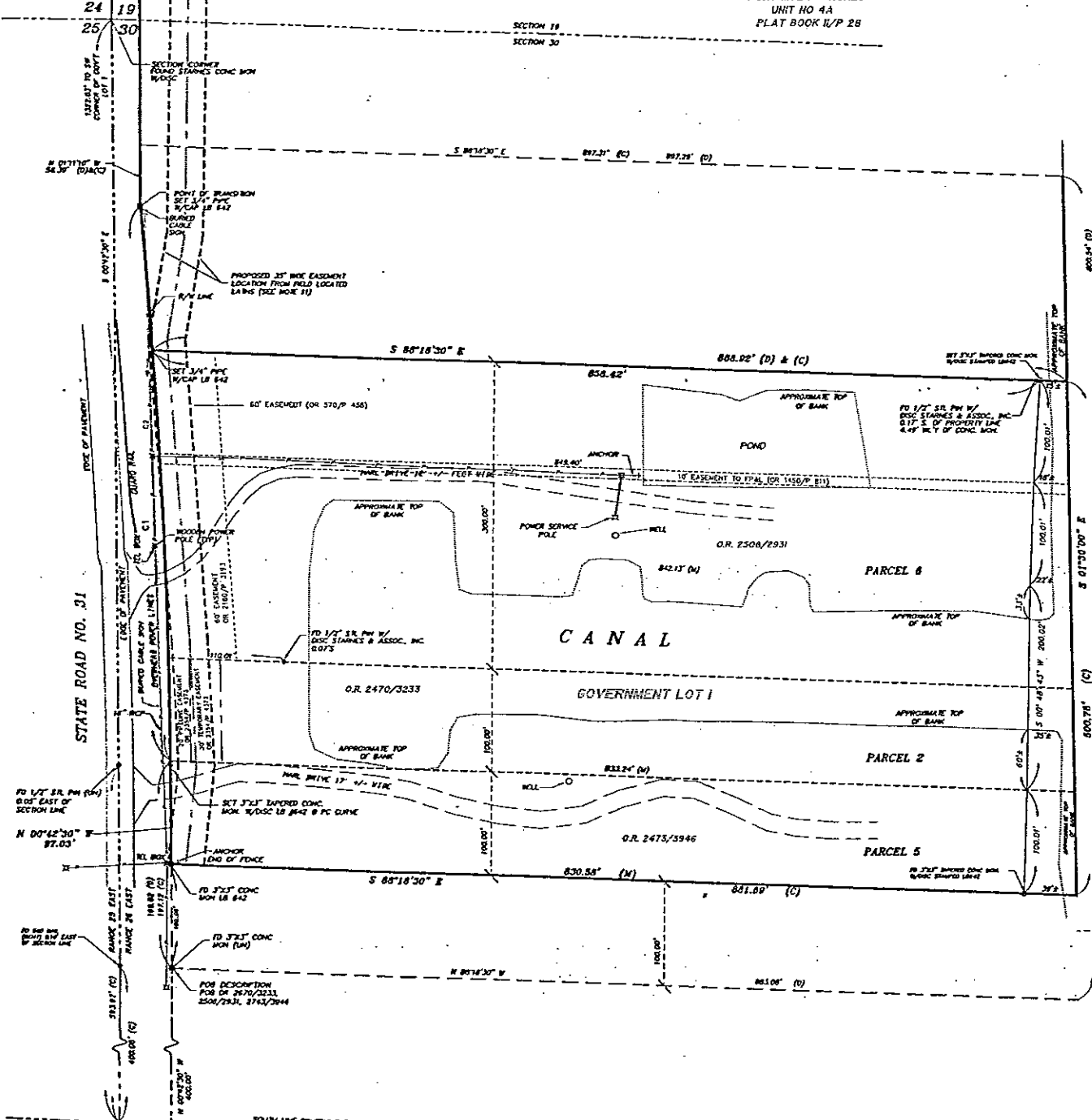
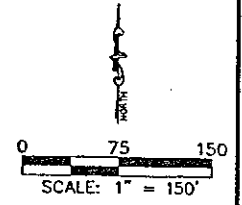
DESCRIPTION TO ACCOMPANY EXHIBIT  
PARCEL IN  
THE NW 1/4  
SECTION 30, TOWNSHIP 43 SOUTH, RANGE 26 EAST  
LEE COUNTY, FLORIDA

**JOHNSON ENGINEERING, INC.**

ENGINEERS, SURVEYORS AND ECOLOGISTS  
2158 JOHNSON STREET, P.O. BOX 1550, FORT MYERS, FLORIDA 33902-1550, PHONE (941) 334-0046

REV 12/3/02 - EXHIBIT SKETCH  
REV 08/07/00 - CERTIFICATION  
REV 7/13/00 - EASEMENTS

DATE	PROJECT NO.	FILE NO.	SCALE	SHEET
12/3/2002	991946	21597SUR_REV	1"=150'	2 OF 2



- LEGEND**
- LB = LAND SURVEYING BUSINESS
  - OR = OFFICIAL RECORD BOOK
  - DOT = DEPARTMENT OF TRANSPORTATION
  - R/W = RIGHT OF WAY
  - FD = FOUND
  - (TYP) = TYPICAL
  - PB = PLAT BOOK
  - R = RADIUS
  - L = LENGTH
  - C = CHORD DISTANCE
  - CB = CHORD BEARING
  - (UN) = UNNUMBERED
- LEGEND**
- (C) = CALCULATED
  - (D) = DEED
  - (M) = MEASURED
  - CONC = CONCRETE
  - MON = MONUMENT
  - W/ = WITH
  - DESC = DESCRIPTION
  - POC = POINT OF COMMENCEMENT
  - POB = POINT OF BEGINNING
  - COR = CORNER
  - GOV'T = GOVERNMENT
  - TEL = TELEPHONE

- NOTES:**
- DATE OF LAST FIELD WORK: MAY 17, 2000.
  - BEARINGS SHOWN HEREON ARE BASED ON THE EASTERLY RIGHT-OF-WAY LINE OF STATE ROAD NO. 31 TO BEAR N 00°42'30" W.
  - THERE ARE NO USABLE ENCROACHMENTS, OTHER THAN ANY SHOWN.
  - THERE ARE NO SUBSTANTIAL USABLE IMPROVEMENTS.
  - SURVEY MADE WITH REVIEW OF "FUND COMMITMENT FORM" PREPARED BY ATTORNEYS' TITLE INSURANCE FUND, INC. COMMITMENT NO. CF-274925, EFFECTIVE DATE: APRIL 25, 2000 @ 11:00 P.M.
  - THIS SURVEY DOES NOT MAKE ANY REPRESENTATION AS TO ZONING OR DEVELOPMENT RESTRICTIONS ON THE SUBJECT PARCEL.
  - SURVEYED PARCEL IS LOCATED IN FEMA FLOOD ZONE AE (EL. 8') AS SHOWN ON FIRM COMMUNITY PANEL 125124 0225 C, EFFECTIVE DATE: 3/15/94.
  - NO ENVIRONMENTAL ASSESSMENT OR AUDIT WAS PERFORMED ON THE SURVEYED PARCEL BY THIS FIRM.
  - THIS SURVEY WAS PERFORMED FOR THE PURPOSE SHOWN HEREON AND DOES NOT MAKE ANY REPRESENTATION AS TO THE DELINEATION OF ANY JURISDICTIONAL LINES EXCEPT AS SHOWN OR NOTED HEREON.
  - PARCEL CONTAINS 10.12 ACRES, MORE OR LESS.
  - THERE IS A BLANKET EASEMENT TO FLORIDA GAS TRANSMISSION COMPANY AS RECORDED IN OFFICIAL RECORD BOOK 3145 AT PAGES 3223, 3239 & 3244 OF THE LEE COUNTY RECORDS FOR A 35' WIDE EASEMENT AND A 50' WIDE CONSTRUCTION EASEMENT, TOGETHER WITH AN INGRESS AND EGRESS EASEMENT TO THE 35' AND 50' WIDE EASEMENTS.

PARCELS 2, 5 & 6  
BOUNDARY SURVEY  
PARCEL IN  
THE NW 1/4  
SECTION 30, TOWNSHIP 43 SOUTH, RANGE 26 EAST  
LEE COUNTY, FLORIDA

**JOHNSON ENGINEERING, INC.**  
ENGINEERS, SURVEYORS AND ECOLOGISTS  
2158 JOHNSON STREET, P.O. BOX 1550, FORT MYERS, FLORIDA 33902-1550, PHONE (941) 334-0046

DATE	PROJECT NO.	FILE NO.	SCALE	SHEET
12/3/2002	991946	21597SUR_REV	1"=150'	1 OF 2

**CURVE DATA**

CURVE	RADIUS	LENGTH	CHORD	CHORD BEARING	DELTA
C1	5779.58(C)	404.33(C)	202.25(C)	N02°42'45" W (C)	04100.30' (C)
C2	5779.58(D&C)	546.37(D&C)	273.39(D&C)	N03°23'00" W (D&C)	0524'39" (D&C)

REV 12/3/02 - EXHIBIT SKETCH  
REV 08/07/00 - CERTIFICATION  
REV 7/13/00 - EASEMENTS

POC DESCRIPTION  
POB OF 2670/2333, 2506/2931, 2743/2944  
S.R. COR. GOV'T LOT 1

SUBMITTAL